

BEHR 

exteriors

color collection



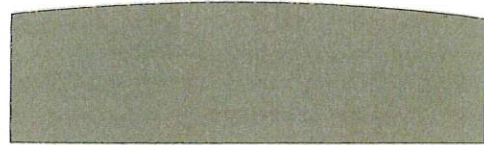


modern *views*

contemporary | mid-century

Streamlined sensibility and design support a palette of neutrals with brilliant accents.

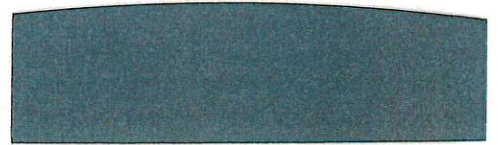
POPULAR COLORS



Palm Desert N310-6°
Toasty Gray N320-2^u | Maple Glaze PPU3-16°



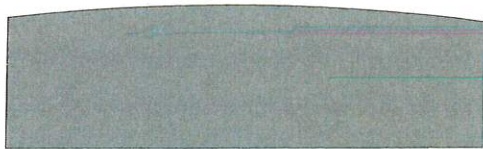
1



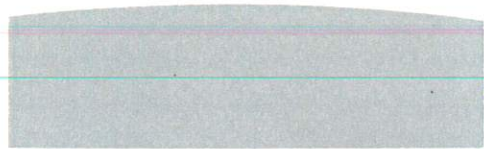
Midnight Blue N480-7°
Cottage White 13^u | Plantain Chips M290-6°



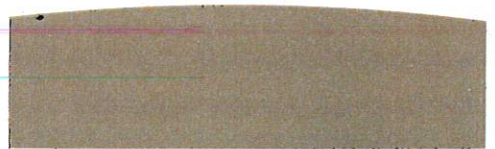
2



Wood Ash N360-5A° (E)
Silver Marlin N360-2^u | Soft Boiled[†] P270-6°



Lunar Surface N460-3° (E)
Campfire Ash N320-1^u | Rio Rust S190-6°



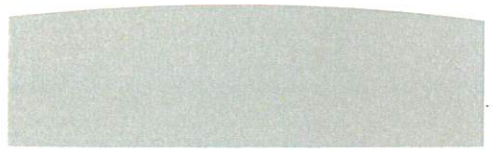
Wild Mustang N240-6°
Sentimental Beige YL-W13^u | The Real Teal P470-7°



Silver Ash GR-W11^u
Still Gray N360-3^M (E) | Arrowhead N320-6°



Original White N290-1^u
Kindling N200-6° | Luscious Lime[§] P330-7°



Light Year N370-3° (E)
Binary Star N450-6° (E) | Deep Fire[†] M180-7°



[§]This color may require multiple coats.

[†]This color requires multiple coats. Use with a custom tinted primer coat for improved hiding.



timeless appeal

colonial | modern tudor

Tradition and elegance define the classic color palette for these dignified homes.

POPULAR COLORS



Natural Twine S310-3^M
High Style Beige N270-1^U | Deep Breath S460-7^D



Perfect Taupe PPU18-13^M
ULTRA PURE WHITE® | Ink Black N490-7^D



Dark Pewter PPU18-04^M (E)
Evening White N460-1^U | Tornado Season S450-6^D



Polar Bear 75^U
Blackout N510-7^D | No More Drama+ P140-7^D



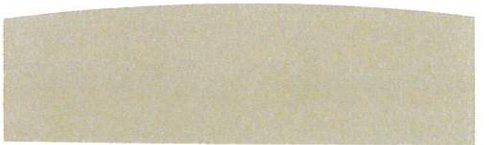
Adirondack Blue N480-5^M (E)
Swiss Coffee 12^U | Sugar Beet^S M130-7^D



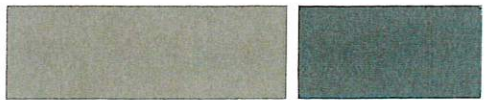
River Road N270-5^D
Navajo White 22^U | Aubergine N100-7^D



Livingston N330-5^M (E)
Ashen Tan N220-2^U | Equestrian Green S410-7^D



Riviera Beach PPU7-07^M (E)
Ottetail N220-5^M (E) | Hematite N460-6^D



MARQUEE® One-Coat limitations apply. For more information, visit Behr.com/marqueeguarantee.

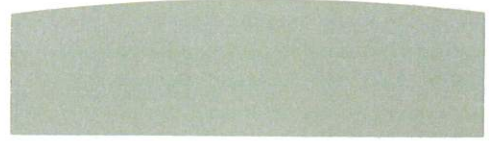


american casual

farmhouse | cottage | coastal

A palette of soft yet strong pastels offers the perfect color complements for the country inspired style.

POPULAR COLORS



Weathered Moss N380-3^U (E)
White 52^U | Little Sun Dress¹ P280-5^D

1

Jungle Camouflage N350-4^M (E)
Authentic Tan N290-2^U | Summerwood S290-4^M

2



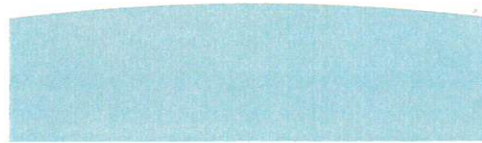
Corn Stalk M290-3^U
Twinkling Lights M280-1^U | Trailing Vine S390-7^D



Spun Cotton YL-W09^U
Black Mocha PPU24-01^D | King Salmon⁸ M180-5^D



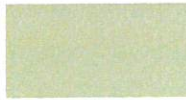
Liquid Mercury N510-5^M (E)
Frost 57^U | Resort Sunrise M180-2^U



Ocean Boulevard PPU13-10^U (E)
Cotton Knit PPU7-11^U | Fresh Brew M330-5^M



Shiitake N220-4^M (E)
Off White 73^U | Washed Olive S350-3^M (E)



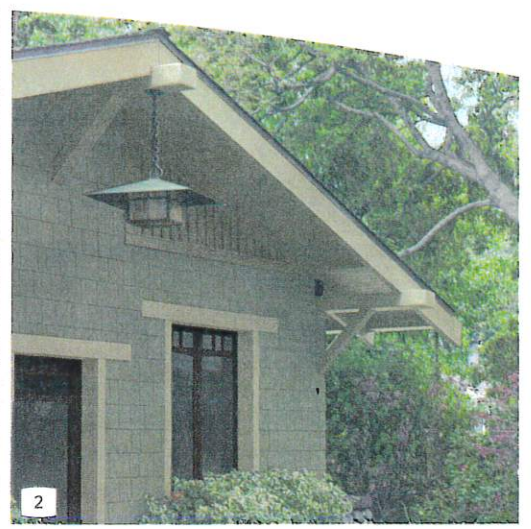
Cinnamon Tea S200-2^M
Aged Beige PPU7-09^U | Starless Night PPU14-20^D



(E) Denotes One-Coat Hide when tinted into MARQUEE® EXTERIOR Paint.



1



2

refined craft

ranch | craftsman | bungalow
 The classic details that adorn these homes stand out when painted with organic, natural hues.

POPULAR COLORS

1

Cascade Beige N240-1^U
 Orion Gray N510-6^D | Harmonious Gold M300-3^M

2

Incognito N370-5^M (E)
 Sandstorm N310-3^U | Havana Coffee N210-7^D

Pottery Wheel N250-3^M
 Adobe Sand N240-2^U | Whiskey Barrel N230-6^D

Juniper Ash PPU12-16^D (E)
 Polo Tan N260-3^M | Cavalry Brown N220-7^D

Sustainable S350-4^M (E)
 Antique White 23^U | Divine Wine PPU1-02^D

Pinecone Hill N410-6^D
 Desert Khaki N310-4^M (E) | Perfect Penny S180-6^D

Gray Squirrel N320-5^M (E)
 Baked Sienna S220-6^D | Cherry Cola S130-7^D

Nature's Gift N410-4^M (E)
 Casual Khaki N300-3^M | Red Chipotle S160-7^D (E)

Based on lighting and sheen selected, applied paint may vary slightly from color chip shown.